

INSTRUCTIONS FOR INSTALLATION MULTI PURPOSE LED RETROFIT (MPLR)

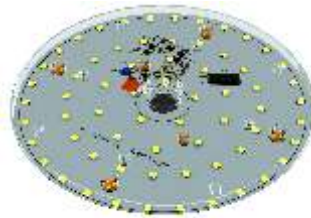
PREPARATION:

Identify and check following parts before installation. Please do not attempt to retrofit if any part is damaged or missing. Contact Overdrive Customer service Please Call: XXXXXXXXXXXX

PACKAGE CONTENTS :

1) MPLR BOX With Standard Accessories

- A) MPLR - 1 pc
- B) Hard Wire Connector - 1 pc
- C) Wire Nut - 4 pcs
- D) Magnetic screws - 2 pcs
(M1- for 25W, M2 - 16W/19W)



A)



B)

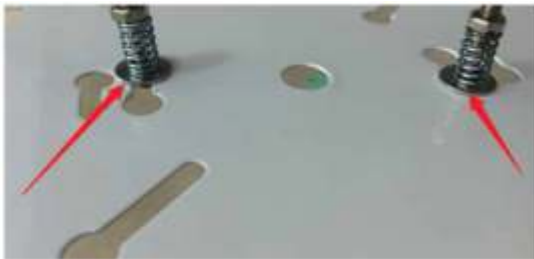


C)

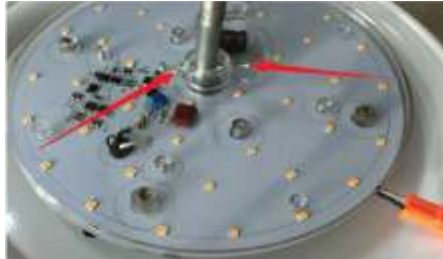


D)

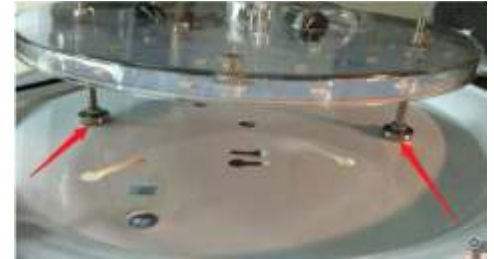
➤ THREE MOUNTING OPTIONS FOR MPLR ON FIXTURE BODY SHOWN BELOW



Spring Screw is inserted and turn to Snap fit MPLR



Tighten the Screw as shown above to mount on Centre Rod



Magnet Screw is screwed in the MPLR and levelled which then sticks to the body of fixture

⚠ WARNINGS AND CAUTIONS:

WARNING - Turn off Power by turning Switch to off Position or Circuit breaker. The MPLR is rated for standard voltage (120V).

WARNING - Risk of fire or electric shock. LED Retrofit Kit installation requires knowledge of electrical systems. If not qualified, do not attempt to install and contact a qualified electrician.

WARNING - Risk of fire or electric shock. Install luminaires as per installation instructions given with MPLR.

WARNING - To prevent wiring damage or abrasion, do not expose wiring to edges of sheet metal or other sharp objects.

FIXTURES TYPE - MPLR ON PLAIN CEILING FIXTURE BODY



INSTRUCTIONS FOR INSTALLATION

- Insert hard wire connector (B) (Fig - 1)
- Insert spring loaded screws of MPLR into key hole of fitting base and rotate (Fig - 2 & 3)
- Connect hard wire connector with MPLR connector (Fig - 4 & 5)
- Connect hard wire connector with input supply wire
- Turn on power switch or turn on circuit breaker for light test
- Switch off MPLR & fix diffuser (Fig - 6 & 7)



Fig - 1

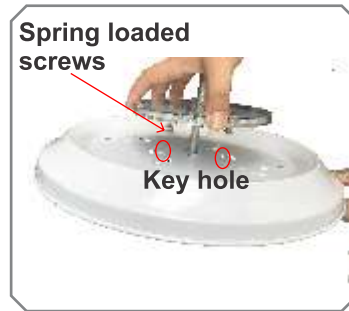


Fig - 2



Fig - 3

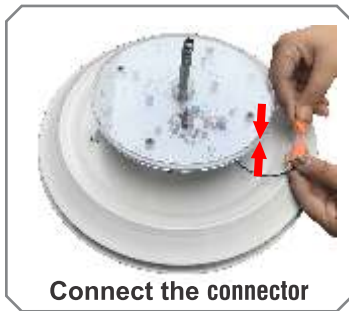


Fig - 4



Fig - 5



Fig - 6



Fig - 7